

Global Scale, Local Speed: A Multi-Region API Ecosystem

Architecting Global 99.99% Availability
for a Premier Parisian Fashion House

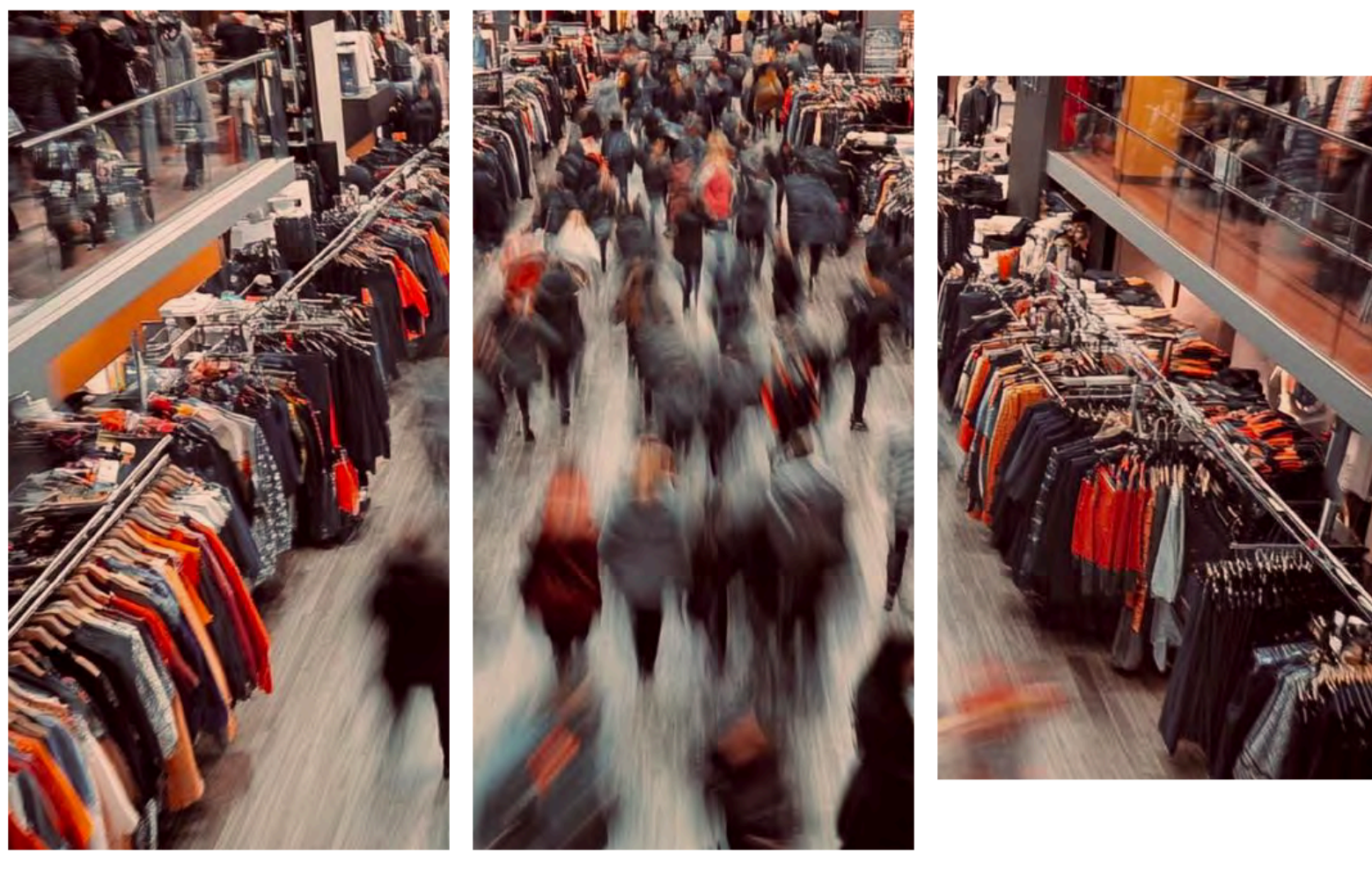
Customer Case Study
Fashion industry



<p>5 Global Zones AMER, EMEA, APAC, ASIA, China.</p>	<p>99.99% Uptime Zero-downtime architecture.</p>	<p>16 Business Units Scaled regional independence.</p>	<p>Real-Time HQ Sync Instant sales data visibility.</p>
--	--	--	---

Client Background: Global Retail

One of the world's most prestigious fashion houses, headquartered in Paris, required a massive expansion of its digital integration and API capabilities to support a truly global retail footprint. As the brand expanded across multiple continents, their existing IT infrastructure needed to evolve from a centralized European hub into a distributed, high-performance ecosystem capable of serving thousands of stores and millions of customers with localized speed and global consistency.



The Operational Bottlenecks:

- Global Latency:** Stores in Asia and the Americas faced significant performance lag when connecting to European-hosted services.
- The China Connectivity Gap:** Local regulatory and technical requirements in China made it nearly impossible to synchronize real-time sales data back to Paris headquarters.
- Governance Paralysis:** With 16 independent business units needing to move at different speeds, the organization lacked a unified CI/CD framework to deploy updates safely and consistently worldwide.

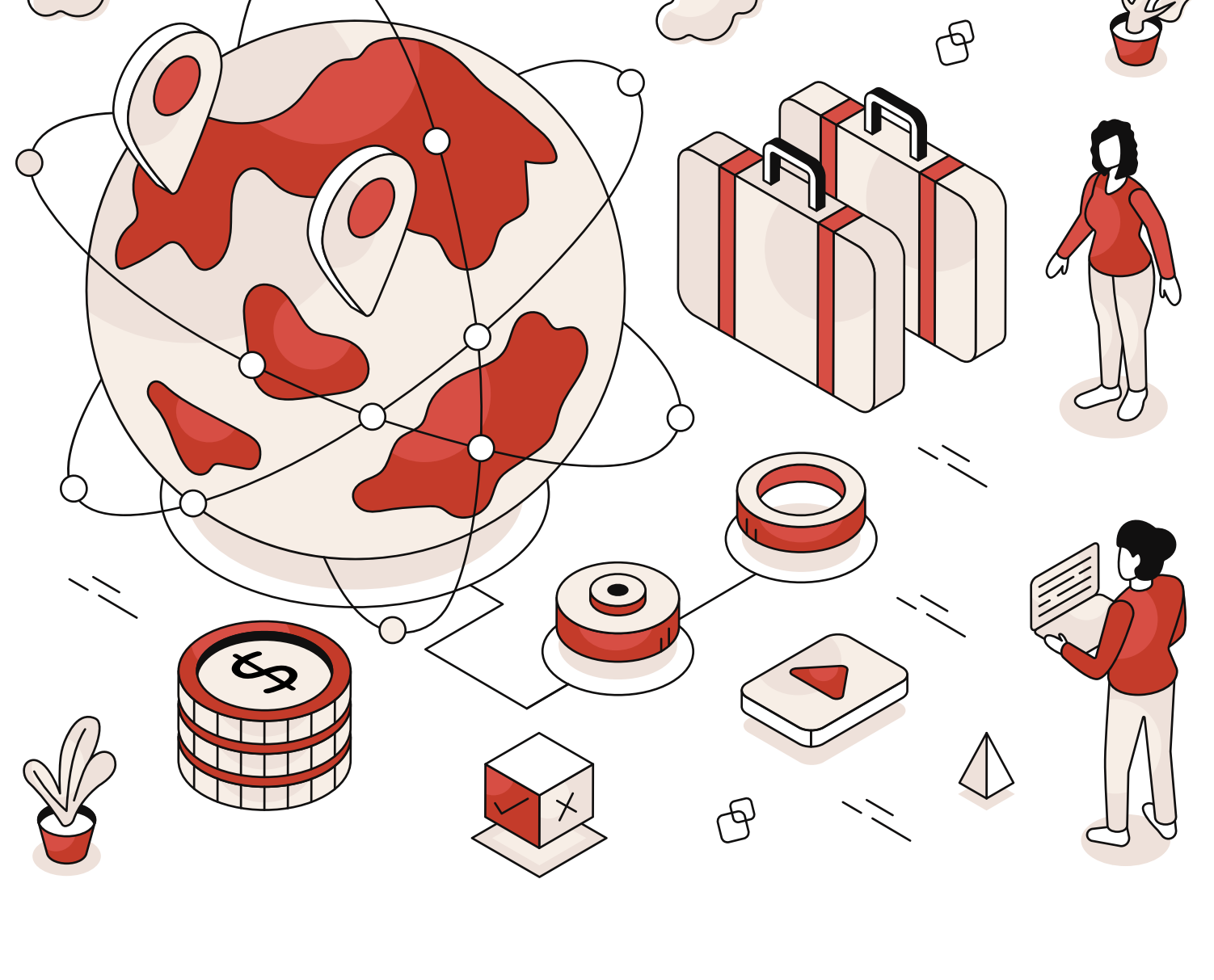
PROBLEM STATEMENT

How can we engineer a global CI/CD framework that empowers 16 independent business units to operate at local speed across 5 continents, while also maintaining 99.99% availability posture?

The Albocensa Solution: The Global Governance Blueprint

Albocensa designed and implemented a **Multi-Region API Mesh** that moved the client away from a single-point-of-failure model to a distributed "Follow-the-Sun" architecture.

We engineered a Global Governance Blueprint that automated the promotion of a shared API codebase across five geographic zones (AMER, EMEA, APAC, ASIA, and China). This framework ensures that while the code is managed centrally, the performance is delivered locally, bridging the gap between complex legacy middleware and the high-speed demands of the global luxury retail market.



The Solution Framework

We didn't just deploy regional servers; we engineered a single, global system of record that digitized the entire lifecycle of API governance and cross-continental data synchronization.

<p>Global CI/CD Release Engine</p> <p>A fully automated delivery pipeline that orchestrates code promotion across multiple continents simultaneously.</p> <p>Data Scope Shared API codebase, regional deployment pipelines, and environment-specific configurations.</p> <p>Primary Use Automated, repeatable releases across five worldwide geographic zones.</p> <p>Key Benefit Eliminated manual deployment errors and reduced global release cycles from days to minutes.</p>	<p>99.99% Availability Architecture</p> <p>A high-availability (HA) infrastructure design with built-in redundancy and regional failover capabilities.</p> <p>Data Scope Regional High-Availability clusters and automated Disaster Recovery (DR) protocols.</p> <p>Primary Use Embedding regional resilience as a default standard for all 16 business units.</p> <p>Key Benefit Ensured total business continuity, preventing a regional cloud outage from affecting the global brand.</p>
<p>Enterprise Governance & BU Sandbox</p> <p>A standardized security and operational framework that allows business units to innovate within "safe" guardrails.</p> <p>Data Scope Security standards, role-based access controls (RBAC), and BU-specific policies.</p> <p>Primary Use Tailored oversight for 16 independent business units to operate without central bottlenecks.</p> <p>Key Benefit Allowed teams to move with speed and independence without diverging from corporate security standards.</p>	<p>Specialized China Data Sync</p> <p>A custom-built deployment zone designed specifically to handle the unique technical and regulatory landscape of mainland China.</p> <p>Data Scope Local China sales data, localized headers, and real-time synchronization hooks.</p> <p>Primary Use Maintaining real-time sales visibility back to Paris HQ from the Chinese market.</p> <p>Key Benefit Delivered consistent global reporting and eliminated the "data black hole" previously caused by regional connectivity issues.</p>

Value-Driven Outcomes

<p>Scaled Independence & Governance</p> <p>The transition from a single-BU model to 16 independent business units allowed the client's regional teams to innovate faster without diverging from the core brand standards. Albocensa delivered the "guardrails" that made this speed safe.</p>	<p>Global Latency Optimization</p> <p>By deploying API runtimes in 5 geographic zones, we reduced latency for regional users by over 70%. In a luxury retail environment, the shift from a "laggy" checkout experience to a sub-second synchronous transaction directly correlates to higher customer satisfaction.</p>	<p>99.99% Service Continuity</p> <p>In high-stakes fashion weeks and peak retail seasons, downtime is not an option. Our multi-zone architecture ensures that even in the event of a regional cloud provider failure, the business continues to operate without interruption.</p>
--	--	--

Technologies

To support a "Follow-the-Sun" architecture, we selected a cloud-native stack focused on extreme availability and automated governance.

[See our full potential >](#)



MuleSoft
Used as the core orchestration engine to connect Paris HQ with global regions. It enables high-performance integration by deploying runtimes locally across five continents.



Anypt Platform
Provides centralized API lifecycle management and a single pane of glass for monitoring. It ensures global governance while allowing 16 business units to scale independently.



Azure DevOps
The automation backbone for global CI/CD pipelines. It ensures that shared code updates are promoted simultaneously and securely across all five worldwide geographic zones.



Azure Active Directory
Manages enterprise identity and Role-Based Access Control (RBAC). It provides the "Zero Trust" security needed to give 16 global business units secure, independent autonomy.



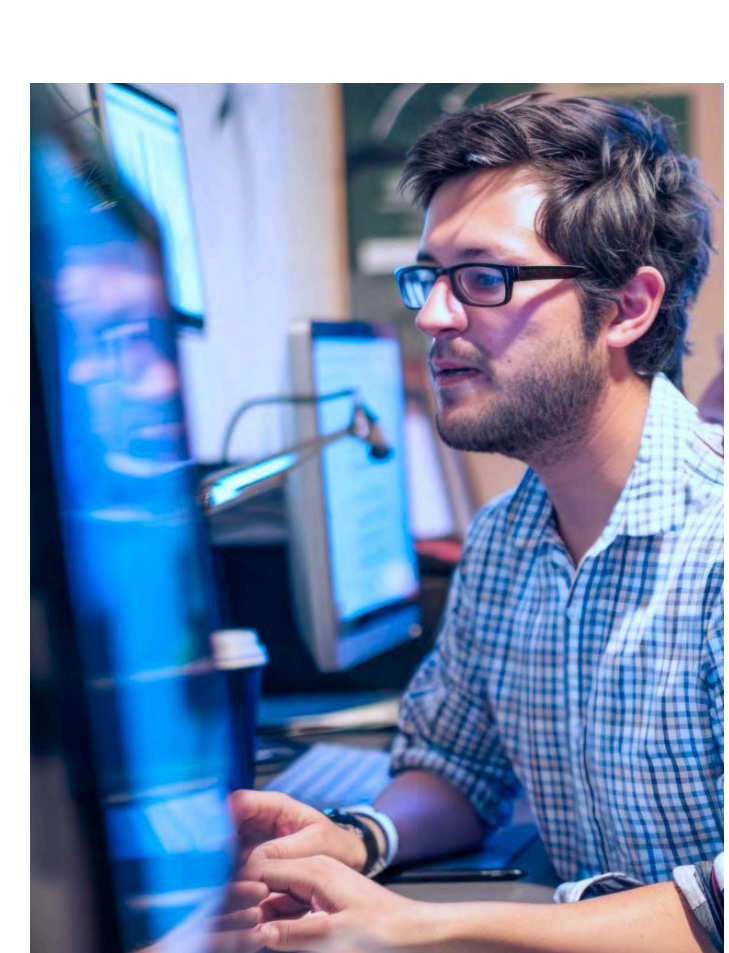
Azure Key Vault
Centralizes secret management and encryption keys. This ensures data sovereignty and regulatory compliance, specifically protecting sensitive credentials within the specialized China deployment zone.



Team

Delivery was executed by a small, senior team consisting of two developers and a solution architect. This structure enabled fast iteration on the CI/CD foundation while maintaining strong architectural control across security, governance, and multi-region resilience requirements.

The solution architect ensured the deployment and governance model could scale as business units increased, while the developers delivered the pipelines, automation, and runtime patterns needed to operationalize a global, highly available platform.



Client Benefits

By modernizing the operational framework and transitioning to a multi-region automated model, Albocensa delivered a resilient, high-performance environment that perfectly aligned with the client's strategic goals for digital sovereignty and global expansion.

<p>Financial & Operational Excellence</p> <ul style="list-style-type: none"> Global Operational Stability: Achieved a resilient architecture with built-in regional failover, ensuring constant service availability for stores and customers worldwide. Streamlined Release Management: The CI/CD approach made application promotion easier for the Change Management Board, significantly lowering the risk of failed deployments. 	<p>Quality & Visibility</p> <ul style="list-style-type: none"> Unified Global Reporting: Real-time synchronization from specialized zones like China ensured that HQ always had a consistent, real-time view of sales and operations. High-Performance UX: Optimized response times globally, ensuring that the brand's digital experience matches its physical luxury standards.
--	--

Strategic Long-Term Value

Beyond the immediate technical gains, the implementation established a foundation for **Continuous Service Improvement (CSI)**. By embedding automated governance and regional autonomy, Albocensa provided the client with the agility to onboard new business units or enter new markets without the traditional "IT bottleneck." This transition successfully moved the organization from a reactive maintenance posture to a proactive, growth-ready digital ecosystem, ensuring that their technical infrastructure remains an asset to their global brand rather than a liability.